

Improving Linkages between CEPF and World Bank Operations

Latin America Workshop

Rio de Janeiro, Brazil

24 – 25 January, 2005



History of CEPF

- Launched in August 2000
- Began grantmaking in January 2001
- Three initial donors – CI, GEF, WB
- MacArthur Foundation and Government of Japan join in 2001 and 2002






Partnership Objectives

Advance conservation in biodiversity hotspots

Engage civil society and foster alliances

Provide complementarity to existing investments



Implement a programmatic approach to conservation

Undertake conservation initiatives that contribute to human welfare

Strategically invest \$200 million

Capture and disseminate knowledge and information using www.cepf.net

What Makes CEPF Different?

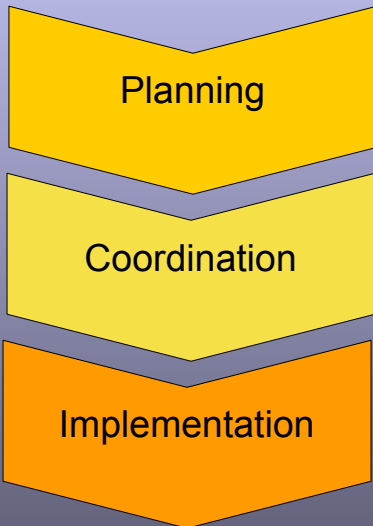
Geographic prioritization
 Civil society
 Flexible funding
 Conservation outcomes
 Ecosystem profiles
 Coordination teams



How We Work

Donor Council	Principles of each donor institution	Strategic guidance Strategy approval Soliciting add'l partners
Working Group	Technical experts from each donor partner	Input and guidance – operational and technical issues
CEPF staff	Management team, grant directors, support	Strategic planning Grantmaking / Monitoring Operations Fundraising
Local coordination teams	Locally knowledgeable organizations	CEPF's eyes and ears on the ground – local input guiding grantmaking

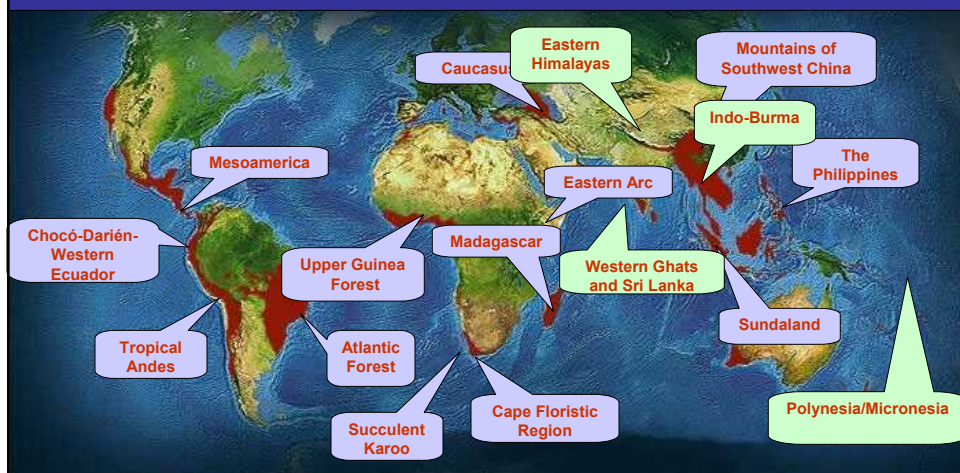
How We Engage Civil Society



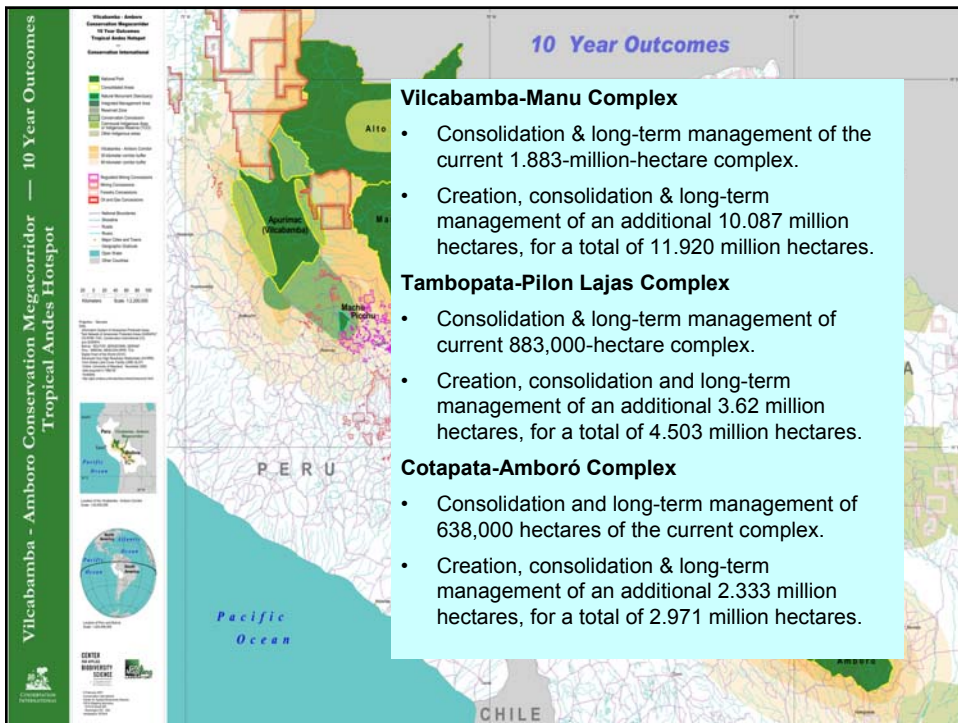
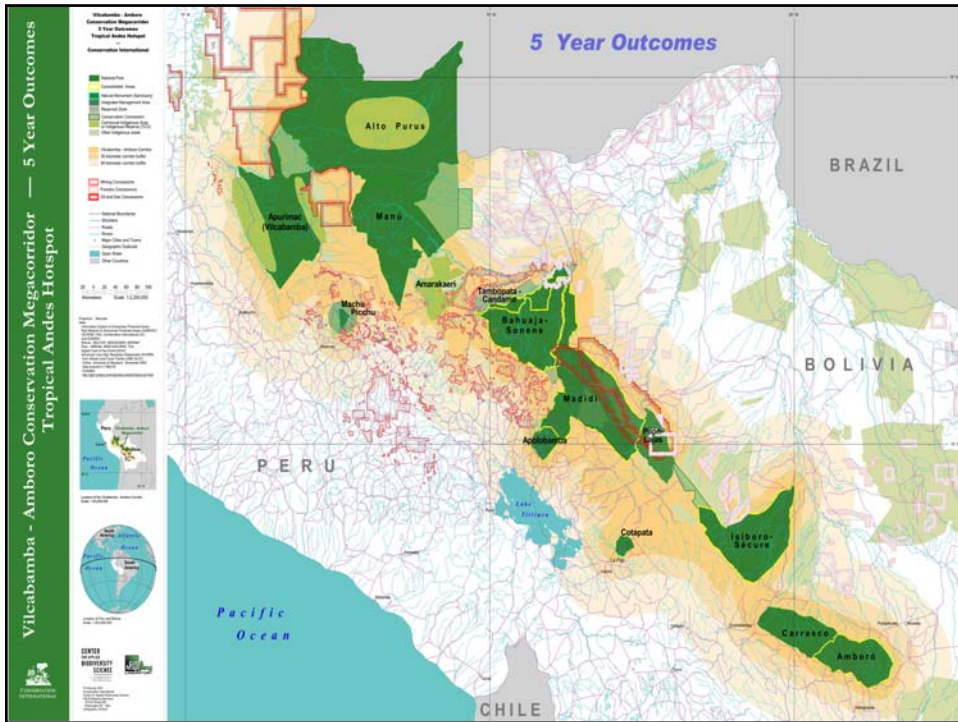
Civil society institutions:

- lead strategy development
- define conservation outcomes
- bring local expertise to CEPF grantmaking
- broaden CEPF's local reach
- achieve conservation results towards CEPF's niche

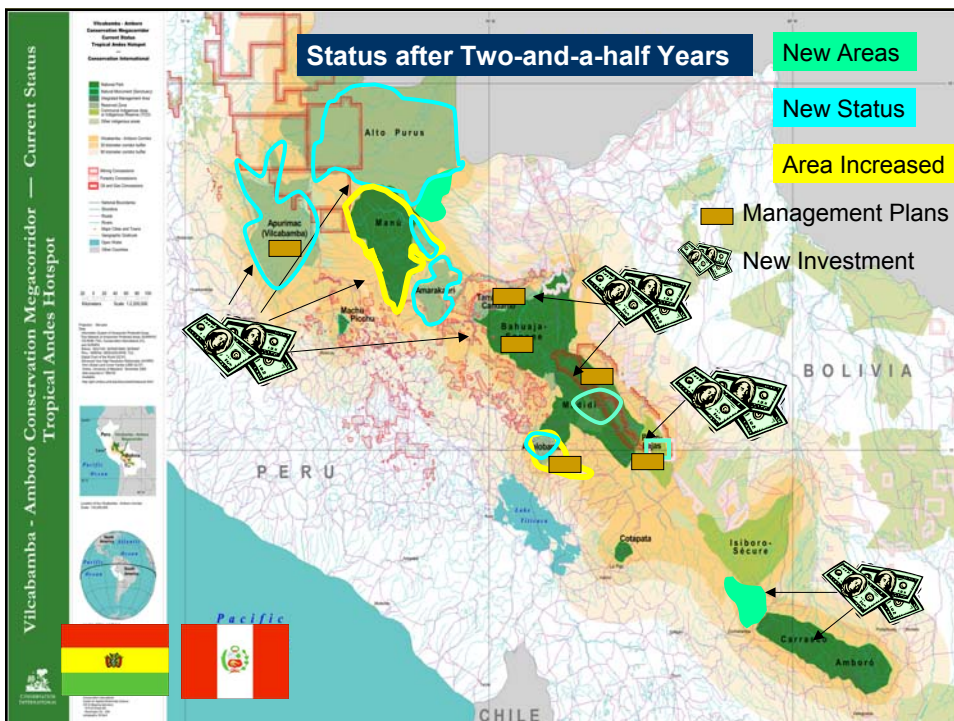
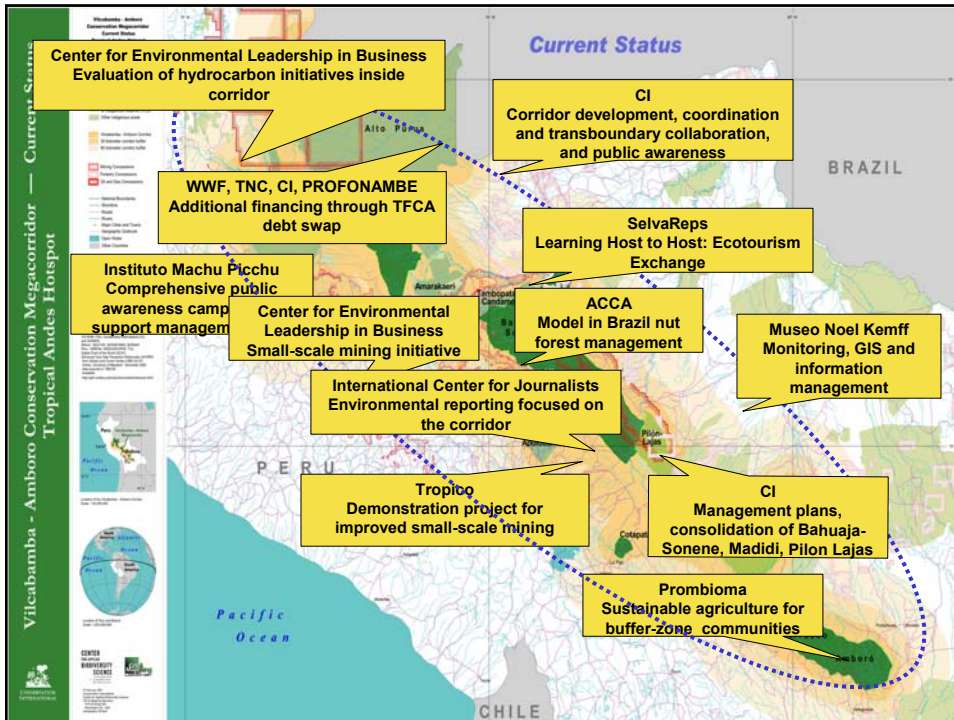
Targeting the Highest Priorities



CEPF is active in 14 regions with plans to expand to four more regions.



- Vilcabamba-Manu Complex**
- Consolidation & long-term management of the current 1.883-million-hectare complex.
 - Creation, consolidation & long-term management of an additional 10.087 million hectares, for a total of 11.920 million hectares.
- Tambopata-Pilon Lajas Complex**
- Consolidation & long-term management of current 883,000-hectare complex.
 - Creation, consolidation and long-term management of an additional 3.62 million hectares, for a total of 4.503 million hectares.
- Cotapata-Amboeró Complex**
- Consolidation and long-term management of 638,000 hectares of the current complex.
 - Creation, consolidation & long-term management of an additional 2.333 million hectares, for a total of 2.971 million hectares.



Fund Overview

5 donors and \$125 million in pledges

13 biodiversity hotspots, 14 active profiles

33 countries

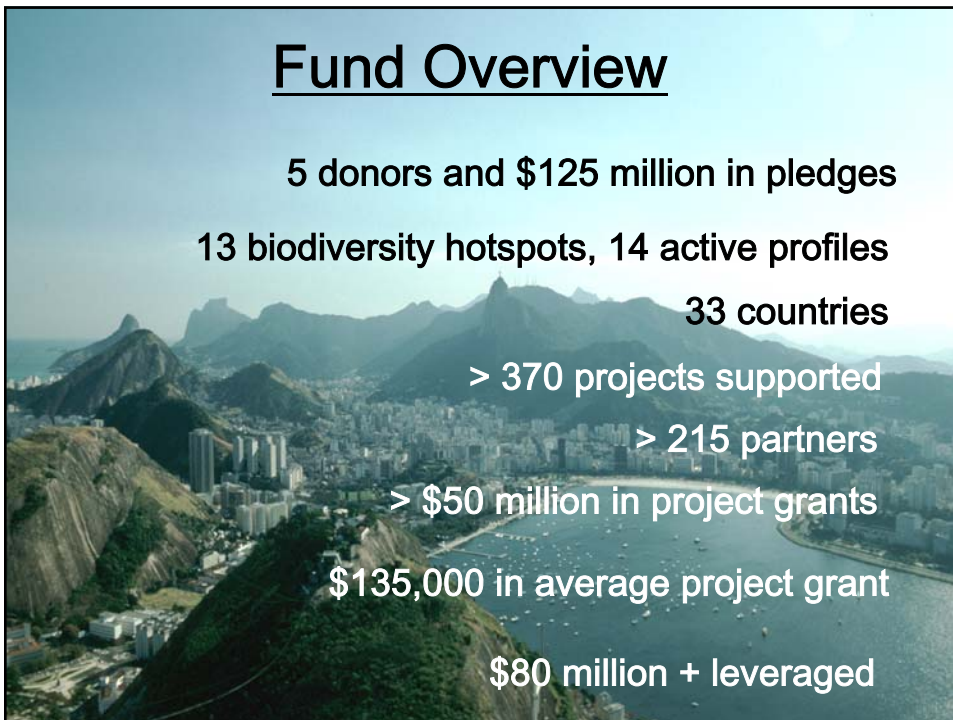
> 370 projects supported

> 215 partners

> \$50 million in project grants

\$135,000 in average project grant

\$80 million + leveraged



CEPF's Impact in Latin America to Date

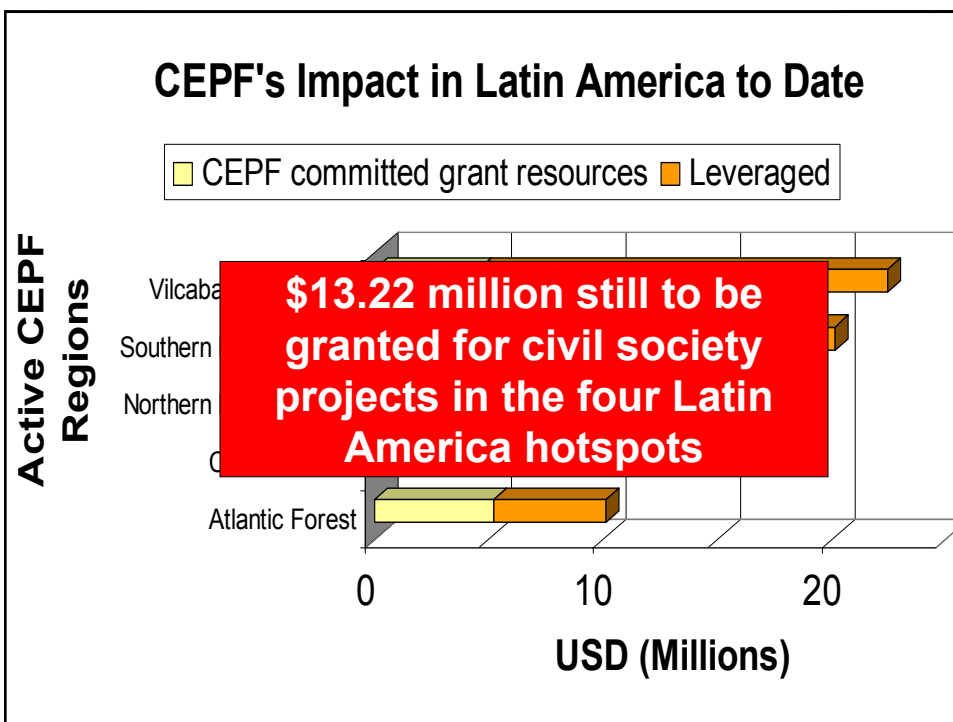
■ CEPF committed grant resources ■ Leveraged

Active CEPF Regions

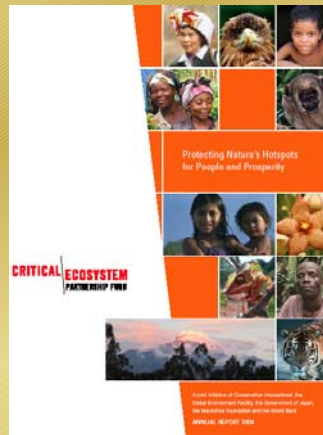
Vilcabamba
Southern
Northern
Cerrado
Atlantic Forest

\$13.22 million still to be granted for civil society projects in the four Latin America hotspots

0 10 20
USD (Millions)



Highlights from 2004




- Expanded to new regions – including Northern Mesoamerica
- Approved \$15.6 million in grants
- Supported 112 NGOs directly
- Enabled small grants programs to reach add'l 160 civil society partners

Thoughts on the Future

Scale-up leveraging and partnership opportunities with World Bank projects

Maximize and sharpen investment throughout the hotspots

Ensure sustainable financing for conservation



The Critical Ecosystem Partnership Fund

**Protecting Nature's Hotspots
for People and Prosperity**

www.cepf.net