

NORTHERN MESOAMERICA

- One of top five Hotspots
- Two corridors:
 - Selva Maya Corridor (México, Guatemala and Belize)
 - Selva Zoque and Chiapas/Guatemala Highlands Corridor (Guatemala and Mexico)



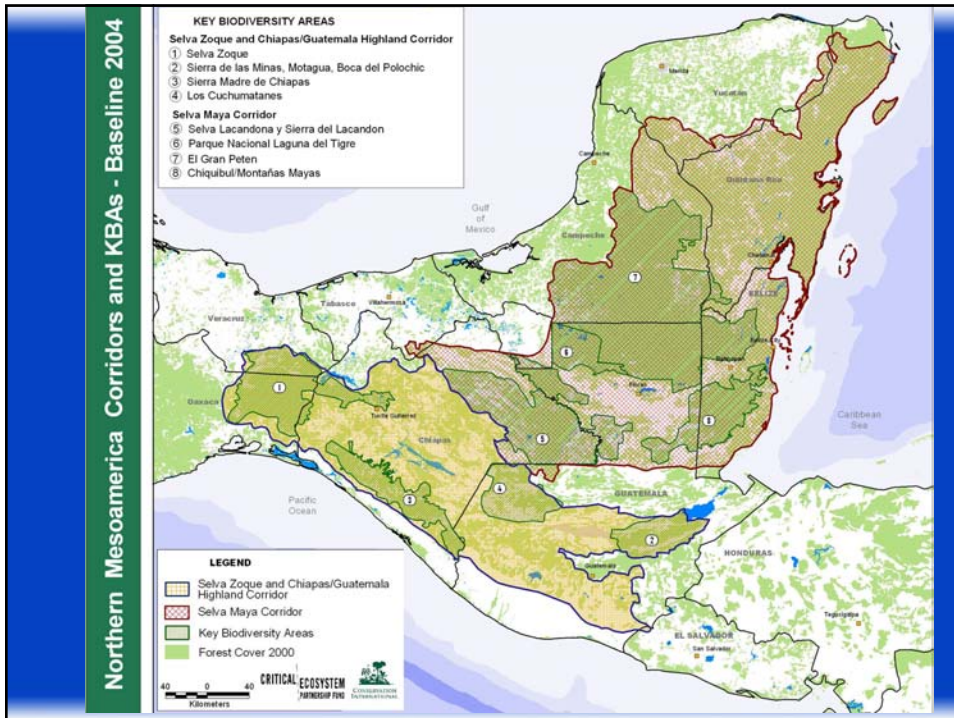
CRITICAL ECOSYSTEM
PARTNERSHIP FUND

Portfolio Preparation 2003

- Analysis of biological priorities, threats, projected investments, and stakeholder consultation.
- Consultation with 74 experts from 42 organizations throughout the region. Workshops held in Mexico, Guatemala, and Belize (National and Regional Level).
- Eight key biodiversity areas selected among the 24 identified in the region.



CRITICAL ECOSYSTEM
PARTNERSHIP FUND



Guiding Principles

- Conservation must be mainstreamed at all political levels and across multiple sectors.
- Northern Mesoamerica is unique for CEPF because it combines site-based conservation with policy dialogue, analysis, and reform.
- CEPF seeks to scale up critical policy decisions at multiple levels for conservation and poverty alleviation.
- Facilitate process to analyze regional initiatives as CAFTA, PPP and Mundo Maya to propose conservation of biodiversity policies and actions.
- Build civil society capacity to achieve four strategic directions.



Strategic Directions

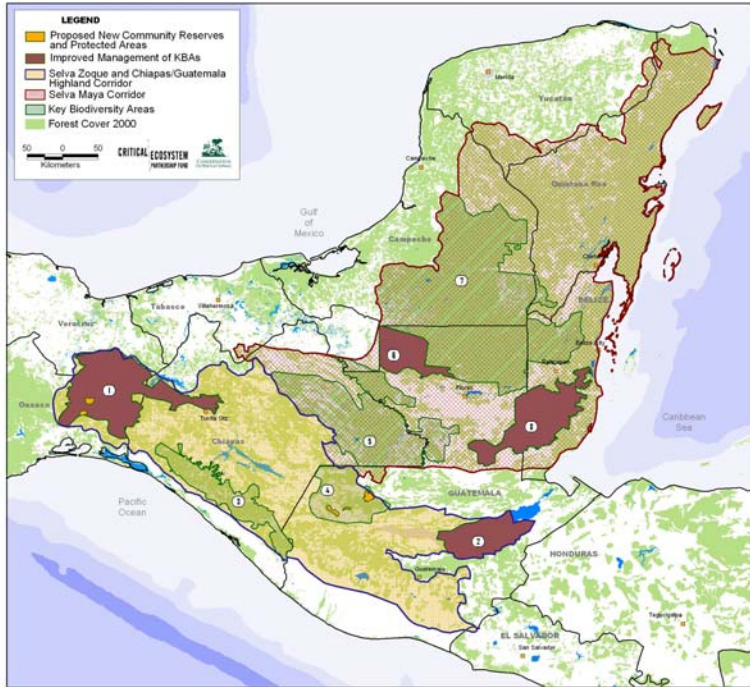
1. Foster civil society participation in regional decision-making on select policies and investments.
2. Collaborate with other donor-funded projects to facilitate and operationalize successful conservation activities in the eight most important key biodiversity.
3. Support priority conservation actions in three priority key biodiversity areas.
4. Prevent the extinction of Northern Mesoamerica's 106 Critically Endangered species.

Activities in 2004

- Four grants awarded for \$1.9 million.
- Conceptualization and co-design of nine grants currently in the pipeline, including building new partnerships.
- CI's Mesoamerican Center for Biodiversity Conservation designated as the Coordination Unit to provide
 - strategic guidance,
 - grant-making support,
 - political engagement, and
 - financial leverage.



Northern Mesoamerica Conservation Outcomes 2006



Selva Maya Grants

Rescue Laguna del Tigre National Park

- Needs assessment of the park. (*Tropico Verde/ParksWatch*)
- New master plan for Laguna del Tigre. (*CONAP and Alianza K'ante'el*).
- Emergency Plan to rescue Laguna del Tigre National Park. (*CONAP and WCS*).

Improve management of Chiquibul – Montañas Maya.

- Needs assessment of key areas of KBA. (*Tropico Verde/ParksWatch Gua*)
- Continued consultations to identify CEPF priorities, Xate is one of the priorities identified and monitoring of biodiversity.



Selva Zoque and Chiapas/Guatemala Highlands Corridor

Improve management of Selva Zoque KBA (*Pronatura, WWF*)

- Forest fires prevention and control,
- New community reserves
- Research globally endangered species, improve governmental coordination on management of the area.

Support water fund for Sierra de las Minas. (*Defensores de la Naturaleza*)

- Form watershed committees,
- Design a payment system,
- Environmental education, and
- Protection of upper watershed.



CRITICAL ECOSYSTEM
YEAR IN REVIEW FUND

Regional Projects

- Ensure CEPF runs smoothly in the field to achieve outcomes.
 - Conservation International Center for Biodiversity Conservation
- Ensure regional fora and the Plan Puebla – Panama integrate conservation objectives into their plans and operations.
 - Conservation Strategy Fund
- Support hotspot monitoring of conservation trends.
 - Conservation International and Partners (pipeline)

CRITICAL ECOSYSTEM
YEAR IN REVIEW FUND

Regional Projects

- Develop sustainable financing mechanisms.
 - In Guatemala: Fundación para la Conservación de los Recursos Naturales y Ambiente en Guatemala (FCG), (pipeline)
- Promote conservation coffee.
 - Conservation International in alliance with Starbucks and USAID (pipeline)
- Identify new areas for public or private protection.
 - Birdlife International and its affiliates in Belize, Guatemala, Honduras, and El Salvador (pipeline)

Potential opportunities for collaboration with WB and GEF

- Species and habitat monitoring in the MBC – Mexico focal areas.
- Help identify future role of the Mesoamerican Biological Corridor.
- Help design new GEF proposal for Maya Biosphere Reserve.
- Build capacity of environmental NGOs to support constructive and collaborative decision-making with governments and international agencies.
- Support CONAP-UNDP-GEF and Grupo 10 in Guatemala in proposal preparation for sustainable tourism in the SIGAP.
- Help design and implementation of SIAM with WB-CCAD